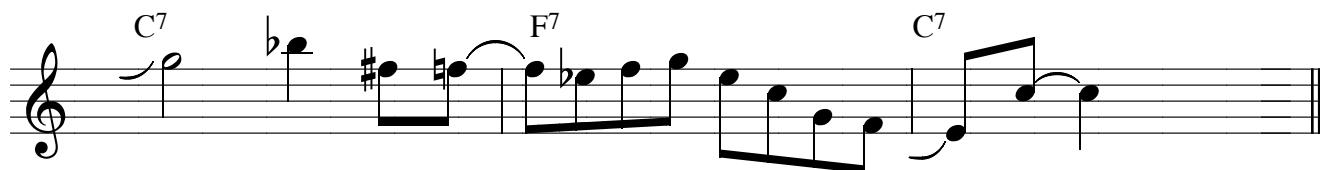


C Blues Lik

C Blues Scale



Many developing jazz musicians rely on the blues scale as their primary approach to improvising on the blues. While the blues scale typically uses a minor third, try incorporating the major third as a means of resolution on the I (home key) chord.

The example above uses the C blues scale on the first three bars of a C blues. Notice that while the the "lik" uses a minor third (E flat) through the F7 chord, the E natural leading to the C on the C7 chord provides a sense of resolution, or completeness, to the phrase.