

Ingraining Licks

Building a jazz vocabulary is similar to building your language vocabulary. A baby doesn't start out speaking their ABC's. A baby first has to learn how to get sounds out of their vocal chords and then they learn to ape their parents. When we listen to the jazz masters, we hear something we like and we want to incorporate that into our playing. Jerry Coker states that building a jazz vocabulary is like building a house, one brick at a time. In this case the bricks represent licks. I encourage all my students to have a notebook of manuscript paper so that when they hear a lick they like, they can write it down. Once you find a lick you like, you want to start using it. You need to ingrain it. The following exercises will help you to do that. To ingrain a lick, you need to put it in all 12 keys using different intervals. You then need to use it in performance or against an Aebersold album. Some licks will come easier than others because they appeal to you more.

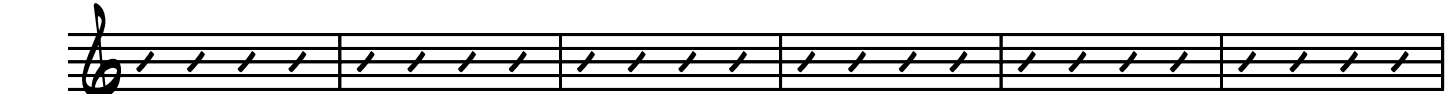
The lick below is taken from Sonny Stitt's solo on "There Will Never Be Another You" from the Royal Roost recordings. This lick has a lot of Bebop characteristics. It starts with the Bebop scale. It then uses the b7 to 3 resolution going from the D- to the G7. It then incorporates the 3 to b9 on the G7 chord.

Playing this lick with the following exercises will help ingrain it and make it available for your next gig!



Ingraining Licks

[B] D-7 G7 CΔ E-7 A7 DΔ F#-7 B7 EΔ



Ab-7²⁷ Db7 GbΔ Bb-7 Eb7 AbΔ C-7 F7 BbΔ D-7 G7 CΔ



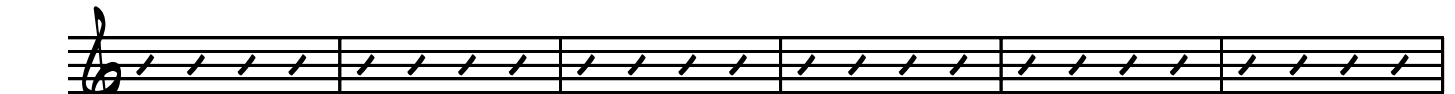
C#-7 F#7 BΔ Eb-7 Ab7 DbΔ F-7 Bb7 EbΔ G-7 C7 FΔ



A-7 D7 GΔ B-7 E7 AΔ C#-7 F#7 BΔ



[C] D-7 G7 CΔ F-7 Bb7 EbΔ Ab-7 Db7 GbΔ



B⁵⁵-7 E7 AΔ D-7 G7 CΔ



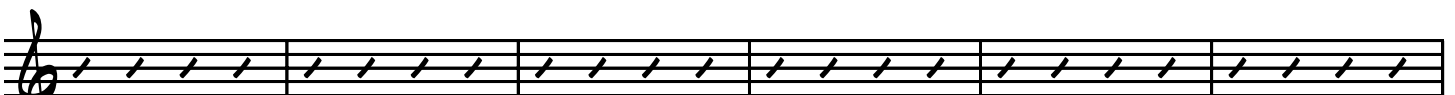
C#-7 F#7 BΔ E-7 A7 DΔ G-7 C7 FΔ



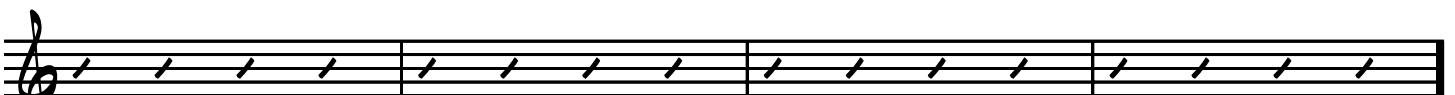
Bb-7 Eb7 AbΔ C#-7 F#7 BΔ



C-7 F7 Bb Eb-7 Ab7 DbΔ F#-7 B7 EΔ



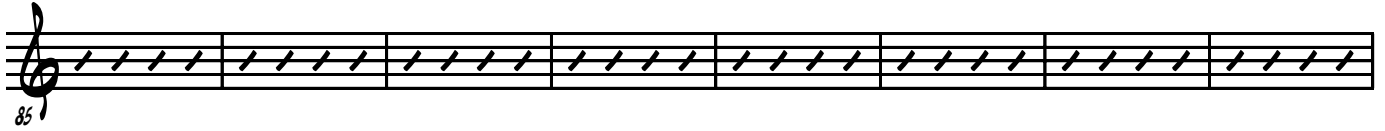
A-7 D7 GΔ C-7 F7 BbΔ



81

Ingraining Licks

85 \square D-7 G7 C Δ F \sharp -7 B7 E Δ B \flat -7 E \flat 7 A \flat Δ D-7 G7 C Δ



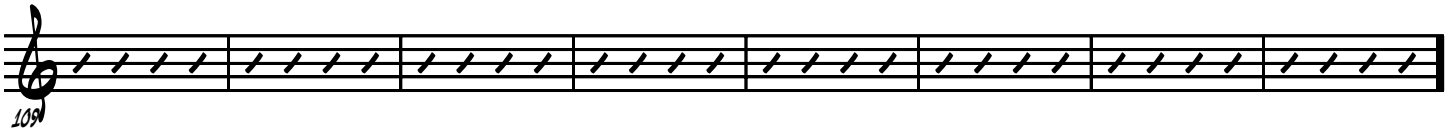
C \sharp -7 F \sharp 7 B Δ F-7 B \flat 7 E \flat Δ A-7 D7 G Δ C \sharp -7 F \sharp 7 B Δ



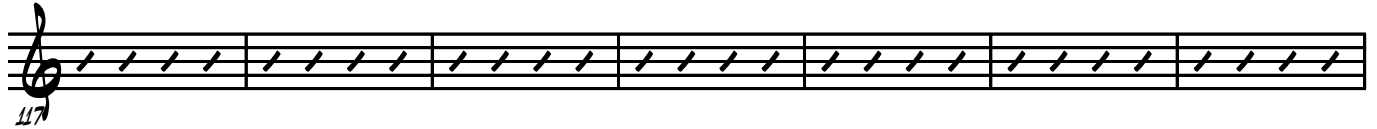
93 C-7 F7 B \flat Δ E-7 A7 D Δ A \flat -7 D \flat 7 G \flat Δ C-7 F7 B \flat Δ



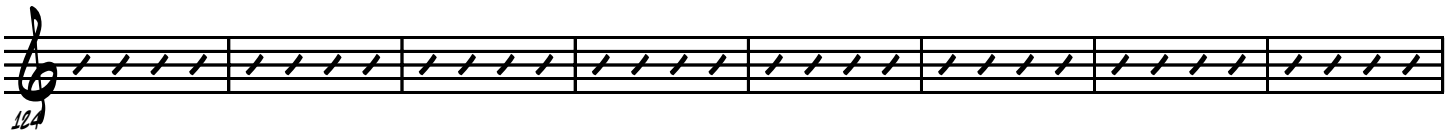
101 B-7 E7 A Δ E \flat -7 A \flat 7 D \flat Δ G-7 C7 F Δ B-7 E7 A Δ



117 \square D-7 G7 C Δ G-7 C7 F Δ C-7 F7 E \flat Δ F-7 B \flat 7



E \flat Δ B \flat -7 E \flat 7 A \flat Δ E \flat -7 D \flat 7 G \flat Δ C \sharp -7 F \sharp 7 B Δ F \sharp -7 B7



125 E Δ B-7 E7 A Δ A-7 D7 G Δ D-7 G7 C Δ

